

DL2000 DNA Marker

Index

| | |
|-------------------------------|---|
| 1. Product Introduction | 1 |
| 2. Use Instructions | 1 |
| 3. Related Products | 1 |

1. Product Introduction

1.1 Product Description:

The DL5000 DNA Marker consists of 6 bands, which are composed of 100, 250, 500, 750, 1000, 2000 bp respectively. Agarose gel electrophoresis suitable for PCR products or DNA fragments ranging from 100 bp to 2000 bp. Among them, 500 bp is the indicator band, showing a bright band with a band concentration of approximately 100 ng / 5 μ L, and the concentrations of the remaining bands are all approximately 50 ng / 5 μ L.

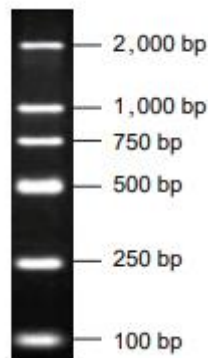


Figure 1. Schematic diagram of the DL2000 DNA Marker band

1.2 Storage buffer:

1 \times Loading Buffer: 10 mM Tris-HCl (pH7.6), 1 mM EDTA, 0.005% bromophenol blue, 10% glycerol.

1.3 Storage conditions:

4 $^{\circ}$ C (for long-term storage, please store at -20 $^{\circ}$ C).

1.4 Recommended Loading Quantity:

3-5 μ L per well.

2. Use Instructions

2.1 Electrophoresis conditions

1.5% agarose, loading volume 5 μ L, pore width 6 mm, electrophoresis buffer 1 \times TBE, 15 V/cm.

2.2 Precautions

- ◆ The DL2000 DNA Marker is a DNA solution that already contains 1 \times Loading Buffer and can be directly loaded during electrophoresis.
- ◆ Do not heat at high temperatures before use.
- ◆ The purity of agarose can affect the clarity of DNA bands. It is recommended to use high-quality agarose with a gel concentration of 1.0 - 2.0%.

3. Related Products

| Product | Cat.No. | Size |
|-------------------|-----------|-------------|
| DL2000 DNA Marker | BR0012-01 | 500 μ L |